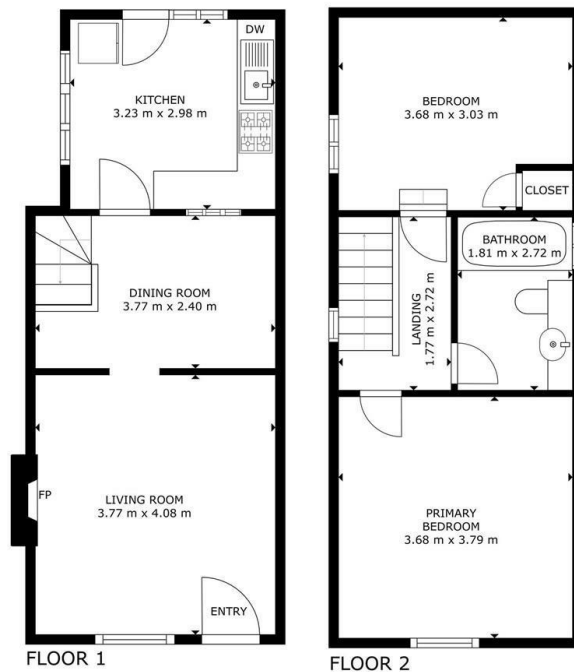




22 High Street, Earls Colne, Colchester, Essex, CO6 2PA

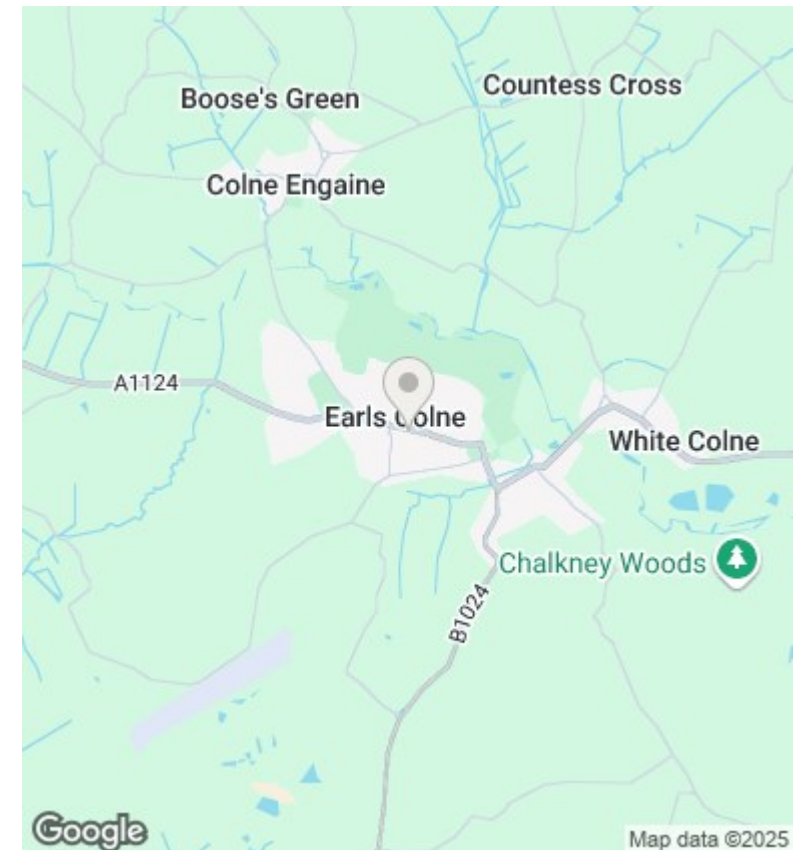
£1,000 Per Month

- Two double bedrooms
- Grade Two listed
- Two reception rooms
- High Street Location
- Viewing advised
- This will be a six month let only



GROSS INTERNAL AREA:
FLOOR 1: 34 m², FLOOR 2: 35 m²
TOTAL: 69 m²
SIZES AND DIMENSIONS ARE APPROXIMATE, ACTUAL MAY VARY.

PHILIP JAMES ESTATES



Directions

Viewings

Viewings by arrangement only. Call 01376563656 to make an appointment.

Council Tax Band

C

EPC Rating:

D

Energy Efficiency Rating		
	Current	Potential
Very energy efficient - lower running costs		
(92 plus) A		91
(81-91) B		
(69-80) C		
(55-68) D	61	
(39-54) E		
(21-38) F		
(1-20) G		
Not energy efficient - higher running costs		
England & Wales	EU Directive 2002/91/EC	